

About Us

Global Conveyor Solutions has more than 15 years of experience in industrial global markets as a key supplier of bulk and package materials handling conveyor systems and components.

A full range of conveyor products including Conveyor Idlers/Rollers, Conveyor Pulleys, Conveyor Belting, Belt Cleaners, Belt Covers and Steel Fabrication are available in standard or custom designs.

Global Conveyor Solutions quality products were developed through innovative design and manufacturing capability offering high performance in conveying and associated plant and equipment applications.

Our manufacturing facilities provide quality certification with material & Test reporting.

Our Standards includes,

AS Standard.

DIN Standard.

JIS Standard.

CEMA Standard.

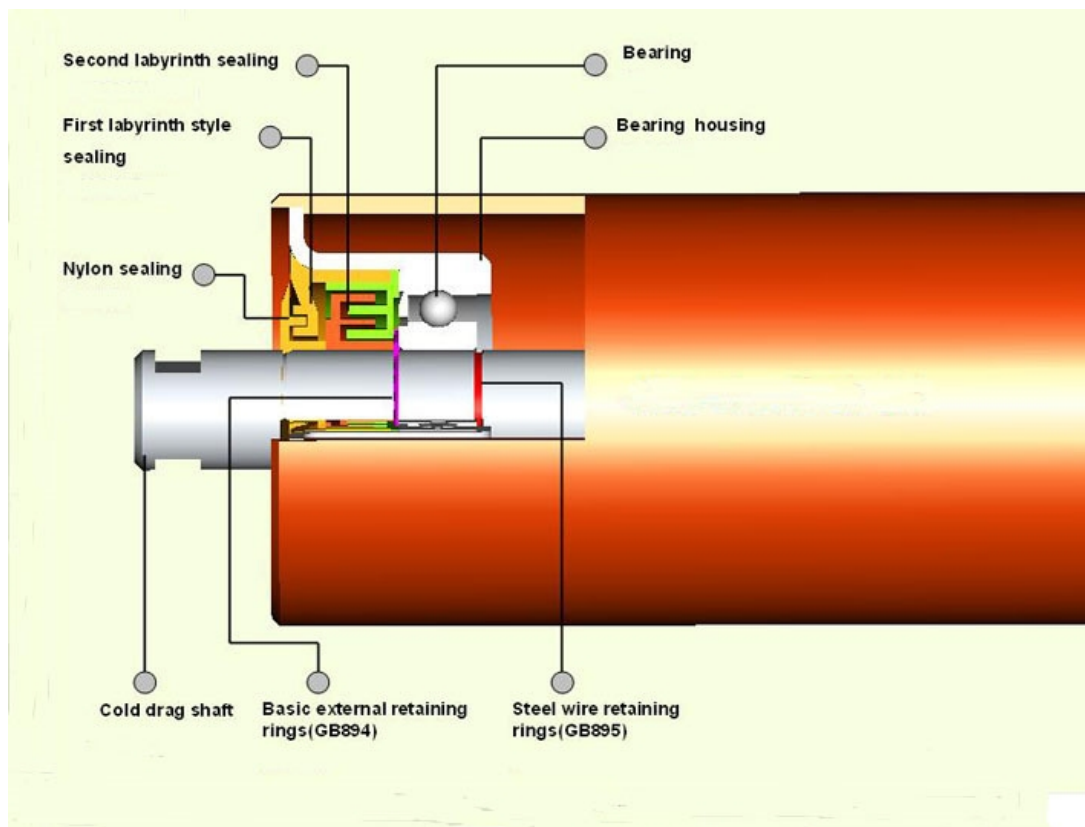
Products

● Conveyor Roller

Adopting the international standard design and manufacturing technology, Global Conveyor Solutions - ICONVEY rollers are manufactured with accurate balance and smooth rotation, low noise, long life and are economically priced. A complete range of idler rollers can be manufactured from a range of materials as follows:

- steel
- rubber disc return
- rubber impact
- HDPE/UHMWPE
- Aluminium

They can be selected to suit the conveyor's speed, capacity and width of the belt, taking into account the product load and the full range of environmental conditions.



Conveyor Roller Specification:

Idler Diameter mm	50	63	76	83	89	102	108	114	127	133	139.8	152	159	165	177.8	190.7	194	219
Length	190mm---3500mm																	

- **Steel Rollers**

Global Conveyor Solutions offers a wide range of steel rollers for applications in the mining and construction industries. ICONVEY rollers are very high quality with selected conveyor welded tube and cold drawn shaft, multi labyrinth ICONVEY sealing to prevent the ingress of dust and water. Bearings selected are deep groove ball, double sealed and precision machined to guarantee long working life.

- **Impact Rollers**

Impact rollers are used as high load carrying rollers replacing normal steel rollers at a the loading point. The design comprises of the inner steel roller fitted with rubber rings to absorb the weight and impact of material falling onto the belt.

- **Disc Return Rollers**

Return rollers are designed to support the return belt. Disc return rollers are used on the return side of the conveyor where materials may adhere to the belt and be carried back to become deposited on standard conveyor return rollers. The disc return rollers act as combs to help prevent material becoming deposited on the return rollers.

- **UHMWPE Rollers**

ICONVEY UHMWPE conveyor rollers are a product that sets a new standard for rollers with excellent combination of wear and corrosion resistance, non stick belt friendly, high impact strength and light weight. (60% less than standard steel rollers). The shell, bearing housing and primary multi labyrinth sealing are all manufactured from the polymer material UHMW PE with a molecular weight of 4 million, more than 10 times that of HDPE.

- **Aluminium Rollers**

Global Conveyor Solutions supply a range of light weight aluminium rollers with an aluminium shell and end cap. Available in a range of roller diameters and bearing sizes. ICONVEY aluminium rollers offer high performance where corrosion resistance and low noise levels are required.

- **Conveyor Idler**

ICONVEY idler sets are available for all belt widths from 350mm~3500mm which are assembled with high quality ICONVEY rollers as above, frames and brackets can be supplied either hot-dip galvanized or with a painted surface finish suitable for your applications.

Our idler series include:

Conveyor Trough Idler, available in light, medium and heavy duty.

Conveyor Trough Impact Idler

Conveyor Trough Training Idler

Conveyor Return Idler

Conveyor Return Trainer

Conveyer Rubber disc Return roller

Conveyor V Return Idler

Conveyer Carry Idler

Conveyor Weigh Idler

- **Frame**

ICONVEY idler frame and brackets are available in a wide range of sizes for belt widths and in various designs for different placements, troughing angles and functional demands, the frames and brackets can be supplied either hot-dip galvanized or with a painted surface finish.

- **Pulleys**

Global Conveyor Solutions offers a wide range of high-quality standard light to medium and heavy-duty pulleys, together with a choice of lagging materials.

- **Conveyor Belting**

Global Conveyor Solutions supplies a full range of conveyor belting for conveyor belt widths from 350mm to 2400mm in both rubber and steel cord belt designs. Our conveyor belting is manufactured for all conveyor specifications in mining, quarrying, power plants, cement, timber, grain and many other conveying applications.

The range includes,

1. Fabric Rubber Belt
2. Steel Cord Belt
3. Fire Resistant Belt
4. Oil Resistant Belt
5. Heat Resistant Belt
6. Cleated Conveyor Belt
7. Nylon/PVC Conveyor Belt

Belt Cleaner

Global Conveyor Solutions can supply belt cleaners for all types of belt and conveyor material applications, models includes Primary, Secondary and V-Plough designs.

Conveyor Belt Covers

Global Conveyor Solutions can supply conveyor belt covers for all belt widths and conveyor applications to provide weather protection and dust control..

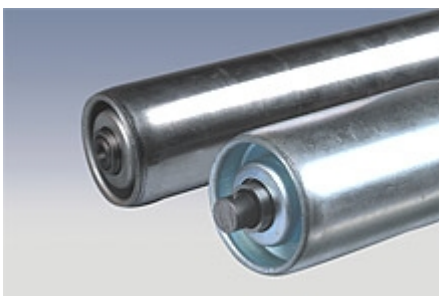
Light Duty Belt Conveyors & Components

Warehouse , processing and package handling conveyors and components to suit your application.

Available standard designs include:

➤ **Gravity Roller Conveyor**

WR-01



Structure: Using special steel bearing seat, rigid bearing

Character: big load capacity , low noise, durable and flexible rotation

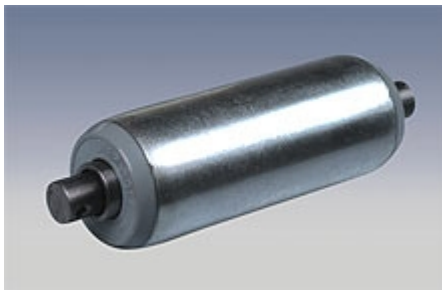
Use: Suitable for heavy roller conveyor, dynamic storage system

Applicable places: Factory, warehouse, transportation center indoor

Type	Dia.& Thickness(mm)	Spindle (mm)	Roller length(mm)	Load (kg)	Roller material	Surface treatment
	φ 38*1.5	φ10\12	80-800	40-125	Carbon steel	Zinc plated

Wr-01-φ38					Stainless steel Aluminum alloy	
Wr-01-φ50	φ 50*1.5	φ12	80-1200	50-150		
Wr-01-φ60	φ 60*2.0\2.5	φ12\15	80-1200	100-450		
Wr-01-φ76	φ 76*3.5	φ20	100-1500	320-645		
Wr-01-φ89	φ 89*4.0	φ20	100-1500	400-800		

WR-02



Structure character: Adopt special plastic steel seat and standard bearing.

Applicable places: Various transportation requirements for roller.

Type	Dia.& Thickness (mm)	Spindle (mm)	Roller length (mm)	Roller material	Surface treatment
Wr-02-φ38	φ38*1.5	φ12	80-800	Carbon steel Stainless steel Aluminum alloy plastic	Zinc plated
Wr-02-φ50	φ50*1.5	φ12	80-1200		
Wr-02-φ60	φ60*2.0	φ12	80-1200		

ZR



Structure: Using steel subulate roller body, rigid bearing.
Character: big load capacity , low noise, durable and flexible rotation

Use: Suitable for heavy roller conveyor, dynamic storage system

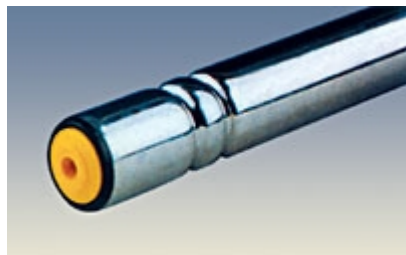
Applicable places: Factory, warehouse, transportation center indoor

Type	Small end Dia. (mm)	Taper	Spindle ID (mm)	Roller length (mm)	Roller material	Surface treatment
					Carbon steel	Zinc plated

Wr-01-φ38	Φ40φ50	3.4°	Φ12	300-800	Stainless steel	
Wr-01-φ50	Φ56	3.4°	Φ12	300-1200		

➤ Drive roller series

CR Series



Structure character: Adopt special plastic steel seat and standard bearing. Produced by pressing and assembling.

Applicable places: Various transportation requirements for roller.

Type	Dia. X Thickness (mm)	Spindle (mm)	Roller length (mm)	Load (kg)	Roller material	Surface treatment
Cr-01(02)- φ38	φ38 X 1.5	φ10\12	150-800	25-60	Carbon steel Stainless steel	Zinc plated
Cr-01(02)-φ50	Φ50 X 1.5	φ12	150-1200	40-100		
Cr-01(02)-φ60	Φ60 X2.0\2.5	φ12\15	150-1200	10-100		

LR-01 Series



Structure Character: Using steel chain wheel working with special plastic steel seat and standard bearing.

Applicable places: Various transportation requirements for roller

Type	Thickness (mm)	Spindle (mm)	Chain wheel type	Roller length (mm)	Roller material	Surface treatment
Lr-01-φ38	1.5	φ12	06B11T\13T	100-1200	Carbon steel Stainless steel Aluminum alloy Plastic	Zinc plated
Lr -01-φ50	1.5\2.0	φ12	08B11T\14T	100-1500		
Lr -01-φ57	1.5\2.0	φ12	08B11T\14T	100-1500		
Lr -01-φ60	2.0\3.0	φ12\15	08B11T\14T	100-1500		
Lr -01-φ76	3.0	φ20	10A13T	100-2000		
Lr -01-φ89	4.5	φ20	10A13T	100-2000		

LR-02 Series



Structure Character: Using special plastic steel chain wheel and seat

Applicable places: Various transportation requirements for roller.

Type	Thickness (mm)	Spindle (mm)	sprocket	Roller length (mm)	Roller material	Surface treatment
Lr-02-φ50	1.5/2.0	φ12	08B11T\14T	100-1500	Carbon steel Stainless steel Aluminum alloy Plastic	Zinc plated
Lr -02-φ60	2.0/3.0	φ12	08B11T\14T	100-1500		
Lr -02-φ76	3.0	Φ20	10A13T\14T	100-2000		

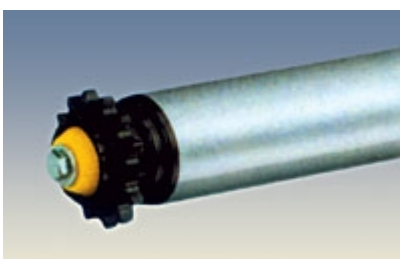
LZR Series



Structure Character: A、B type are produced directly by carbon steel or stainless steel. C type is produced on basis of LR series roller add plastic steel subulate cover.

Type	Small end Dia. (mm)	Taper (mm)	Spindle ID (mm)	Roller length (mm)	Chain wheel	Load (kg)	Roller material	Surface treatment
LZR-φ42(φ50)	Φ42φ50	3.6°	Φ12	200-800	08B14T	10-110	Carbon steel Stainless steel	Zinc plated
LZR-φ56	Φ56	3.6°	Φ12	200-1200	08B14T	45-130		

LJR-01 Series



Accumulation and release character: Rely on the friction of chain wheel & chain wheel seat to deliver torque, when requiring accumulate, produce relative glide between chain wheel and seat, and drive

motor works continuously.

Applicable places: suitable for light loading.

Type	Dia. x Thickness (mm)	Spindle (mm)	Chain wheel	Roller length (mm)	Load (kg)	Roller material	Surface treatment
LJR-01-φ50	φ50 x 1.5	φ12	08B/11T	100-800	35-85	Carbon steel	Zinc plated
LJR-01-φ60	φ60 x 2.0	φ12	08B/11T	100-1200	40-100	Stainless steel	

LJR-02 Series



Accumulation and release character:

Rely on the friction of chain wheel & chain wheel seat to deliver torque, when requiring accumulate, produce relative glide between chain wheel and seat, and drive motor works continuously.

Applicable places:

Suitable for light loading. For example, pallet convey in & out warehouse.

Type	Dia. x Thickness (mm)	Spindle (mm)	Chain wheel	Roller length (mm)	Load (kg)	Roller material	Surface treatment
LJR-02-φ50	φ50×1.5	φ12	08B/9-14T	100-800	40-125	Carbon steel Stainless steel	Zinc plated
LJR-02-φ60	φ60×2.0/1.5	φ12/15	08B/9-14T	100-1200	80-440		
LJR-02-φ76	φ76×3.0	φ20	08B/9-14T	200-1200	250-570		
LJR-02-φ89	φ89×3.5	φ20	08B/9-14T	200-1200	280-710		

➤ Powered Roller Conveyor



Electric Roller is our small Dia. roller and is ideal drive component of industrial auto line & mid-small conveying equipment. We use three-phase asynchronous external rotor as power, three-grade planet gear box system as drive, it has the characters

of compact structure, balance rotating, low noise and low

temperatures, etc. Hot protector in the roller

make motor no damage when roller run locked rotor, it is safe and reliable, convenience. It has torque protector equipment, safe to use. Also when you add converter, achieve single set or multiple sets variable speed, automatically rotate. To choose product please make accordance with “series format” method to indicate product specification. Choose roller specification according to correct frame size when design

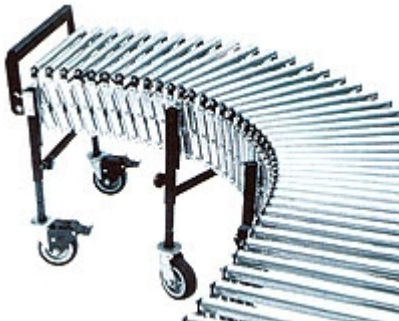
convey.

Type	Rated electricity	Start electricity	Line speed	Input power supply	Output powder
DRB6012	0.12A	0.66A	3-21M/min	Three-phase 220V/380V	30W 50HZ
DRA7620	0.35A	1.25A	5-30M/min	Three-phase 220V/380V	60W 50HZ
Length: 300, 400, 500, 600, 700, 800					
DRZ subulate electric roller made in accordance with above standard					

➤ **90°& 180° Bends**



➤ **Extendable Conveyor**



● **Crusher Machines & Steel Fabrication (please delete “s”from Fabrications on the website)**

Global Conveyor Solutions supply a range of Crusher Machines & Steel Fabrication selected to suit your applications.

● **Metal Detectors**

Global Conveyor Solutions supply a range of metal detectors for the detection of ferrous and non ferrous metal in mining,

quarrying, cement, power stations, process and extractive industries.

● **Magnets**

Global Conveyor Solutions has proven experience in the manufacture and supply of high quality, reliable magnets for use in the removal of ferrous material from conveyor systems. Each

installation is developed to suit the specific requirements.